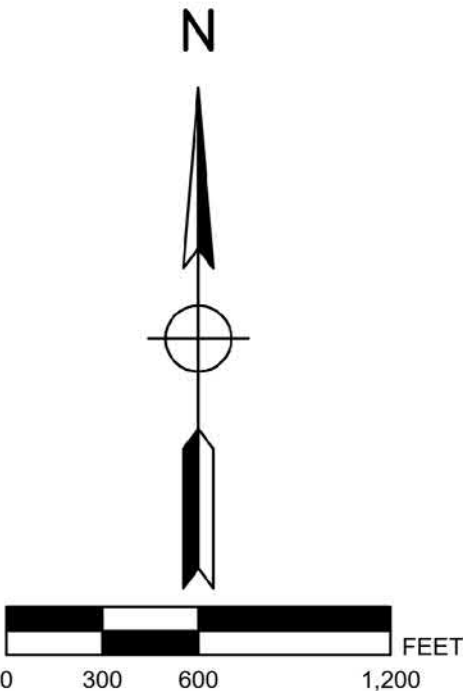
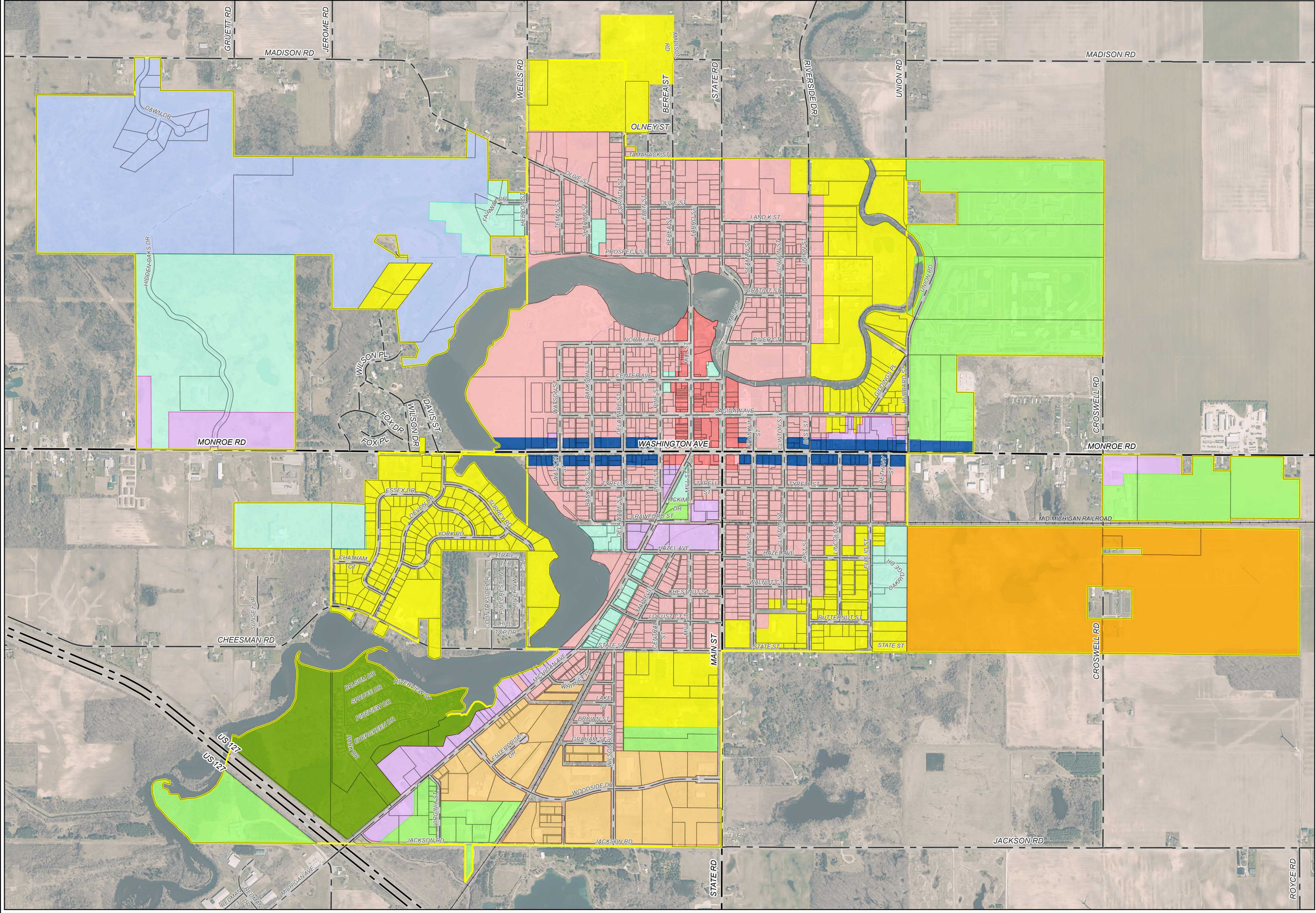





ZONING MAP

CITY OF ST. LOUIS



LEGEND

- R-1
- R-2
- R-3
- R-4
- C-1
- C-2
- I-1
- I-2
- PUD
- TRANSITIONAL
- I-3
- CITY LIMITS

BY	MARK	REVISIONS			DATE
THE WORK REPRESENTED BY THIS DRAWING WAS DESIGNED BY THE ENGINEER FOR THIS SPECIFIC APPLICATION AND SPECIFIC LOCATION DESCRIBED HEREIN IN ACCORDANCE WITH THE CONDITIONS PREVALENT AT THE TIME THE DESIGN WAS DONE. THE ENGINEER DOES NOT GUARANTEE AND WILL NOT BE LIABLE FOR ANY OTHER LOCATION, CONDITION, DESIGN OR PURPOSE.					
CITY OF ST. LOUIS GRATIOT COUNTY, MICHIGAN					
ZONING MAP					
		Spicer Group Inc. 1595 W. LAKE LANSING Suite 200 E. LANSING, MI 48823 Tel. 517-325-9977 www.SpicerGroup.com			
DE. BY: PL		CH. BY: MJC		PROJECT NO.	
DR. BY: RTB		APP. BY: MMC		125727SG2018	
STDS.		SHEET 1 OF 1		DR	
DATE: FEBRUARY 2020		FILE NO.		1	
SCALE: 1"=600'		D - 4180			